



CABLE LUGS SC TYPE

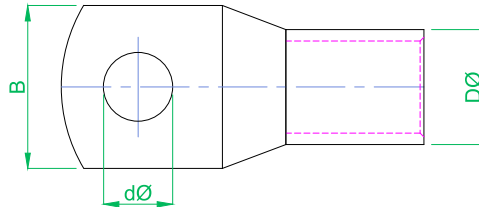
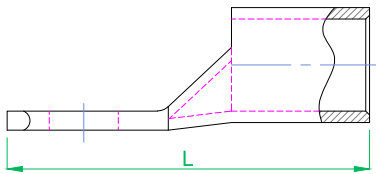
PRODUCTS DESCRIPTIONS

Cable Lugs and Connectors already made in 1986 at our factory and it can be process for 80 tons copper tube with purity level 99.99% according products standar of JIS H3300. Process of termination or jointing cable need cable lug (cable shoe, cable schoen) with good quality because with bad termination cable during process can lead to these cause:

- Energy losses
- Rise Temperature
- Short Circuit

ADVANTAGE OF PRODUCTS

- Made from copper tube with purity level 99.99% and high tensile strength
- Nickel plating & Tin plating
- Made from deoxidized phosphorous copper tube (JIS H3300)
- Working temperature -55°C until 150°C



| NO | TYPE | SPESIFIKASI DIMENSI CABLE LUG SC | | | |
|----|------------------|----------------------------------|----------------|-------------------|-------------|
| | | B (±3mm) | DØ (±0.5mm) | dØ + (0,1-1,0) | L (±3mm) |
| 1 | Cable Lug 10-6 | 11.5 | 6 | 6.0 | 26.0 |
| 2 | Cable Lug 16-8 | 13.5 | 6.7 | 8.0 | 31.5 |
| 3 | Cable Lug 25-8 | 13.5 | 8.4 | 8.0 | 34.0 |
| 4 | Cable Lug 35-8 | 16.0 | 9.9 | 8.0 | 38.0 |
| 5 | Cable Lug 50-10 | 18.5 | 11.8 | 10.0 | 46.0 |
| 6 | Cable Lug 70-10 | 20.6 | 13.9 | 10.0 | 50.5 |
| 7 | Cable Lug 95-12 | 24.7 | 16.4 | 12.0 | 55.5 |
| 8 | Cable Lug 120-12 | 27.0 | 18.5 | 12.0 | 63.5 |
| 9 | Cable Lug 150-16 | 30.0 | 19.7 | 16.0 | 69.0 |
| 10 | Cable Lug 185-16 | 34.0 | 22.4 | 16.0 | 75.0 |
| 11 | Cable Lug 240-16 | 37.0 | 25.0 | 16.0 | 89.5 |
| 12 | Cable Lug 300-16 | 43.0 | 28.8 | 16.0 | 95.0 |
| 13 | Cable Lug 400-16 | 49.5 | 31.9 | 16.0 | 105.5 |
| 14 | Cable Lug 500-16 | 55.0 | 36.2 | 16.0 | 116.0 |
| 15 | Cable Lug 630-20 | 63.0 | 42.0 | 20.0 | 143.0 |

PT Puma Elektrik Niaga

Marketing Office

Jl. Pangeran Jayakarta No. 141M
 Central Jakarta 10730
 Jakarta - Indonesia
 Tel.: +62 21 2268 599
 Fax: +62 21 2268 3803
 E-mail: pen@pumaelektrik.com
 www.pumaelektrik.com

